

# A Short Guide to



## Mobile **Security**

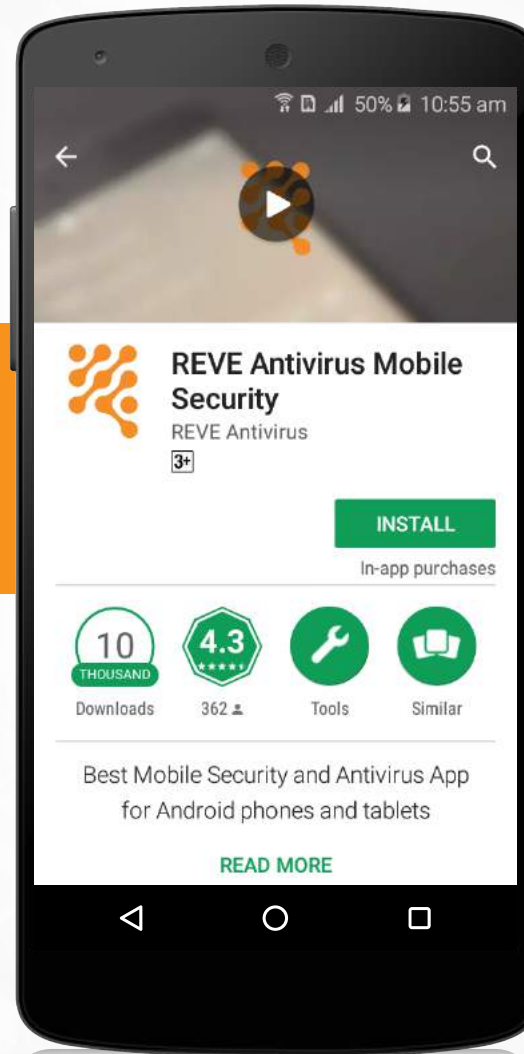
for Android 



# How to install REVE Antivirus Mobile Security

1.

To download REVE Mobile Security, go to Google Play Store and search for REVE Antivirus Mobile Security.

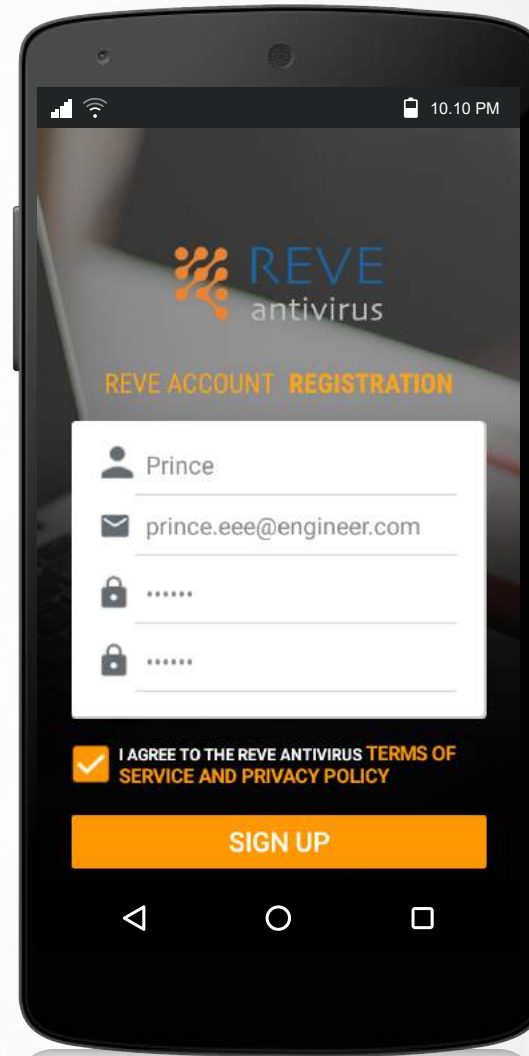


2.

Install REVE Antivirus Mobile Security

# How to install REVE Antivirus Mobile Security

3.  
Click on the Sign Up option.



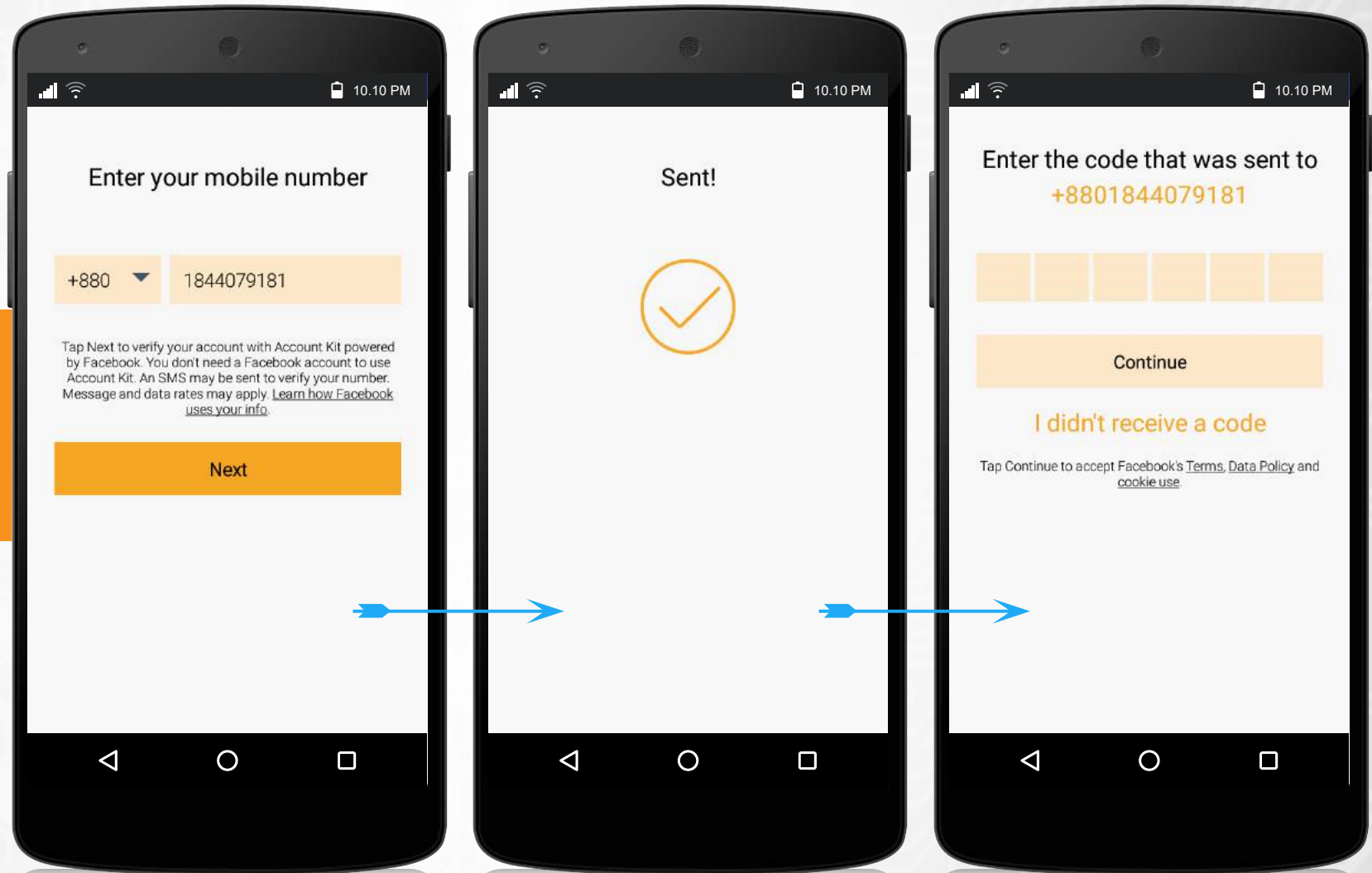
4.  
Enter your name, email id and password and reconfirm your password again.



# How to install REVE Antivirus Mobile Security

5.

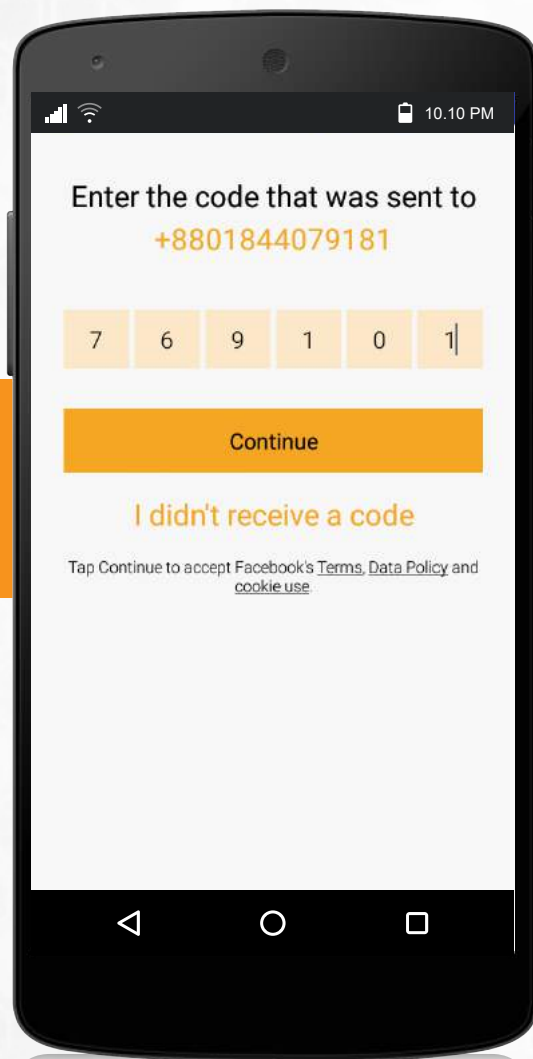
Enter your mobile number to verify that your device is not accessible to anyone other than you.



# How to install REVE Antivirus Mobile Security

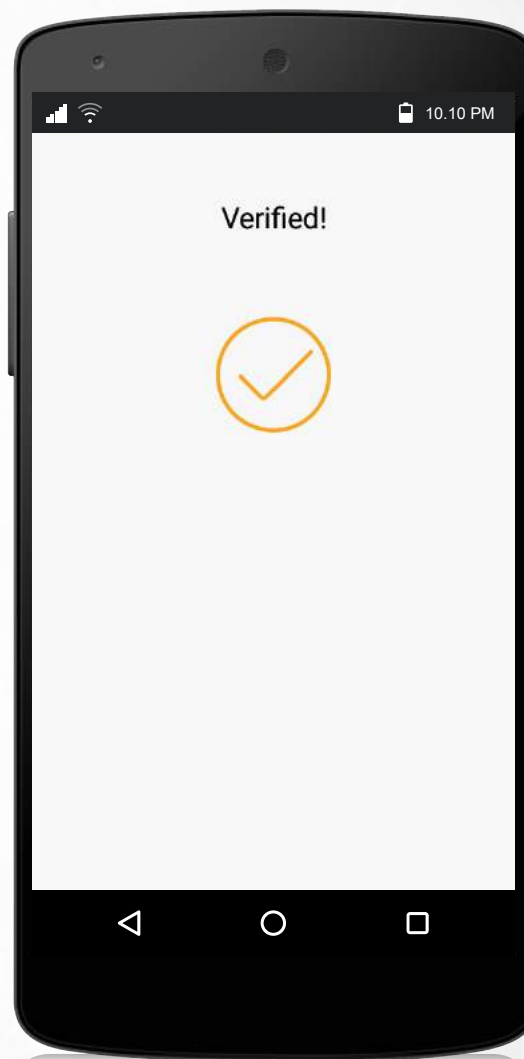
6.

Enter the verification code received on your mobile number.



7.

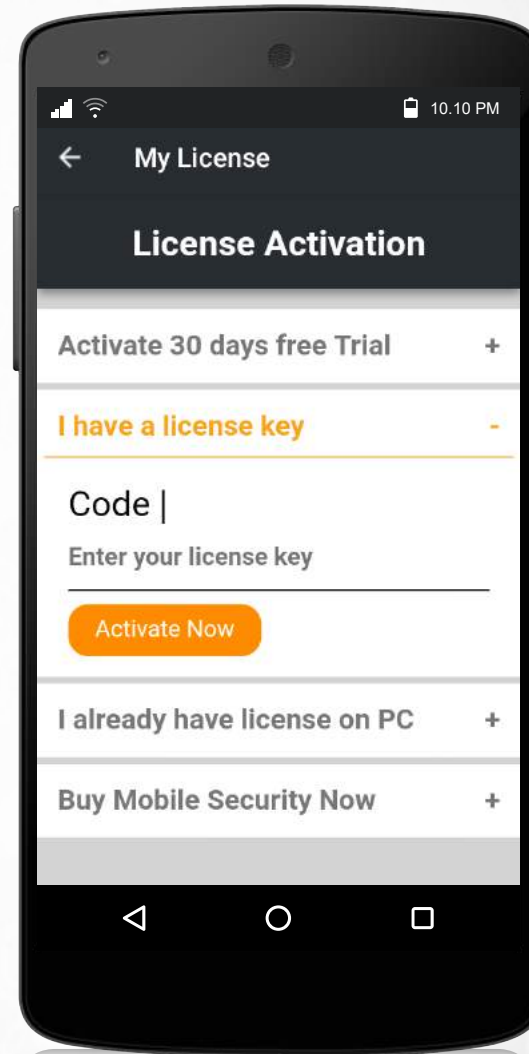
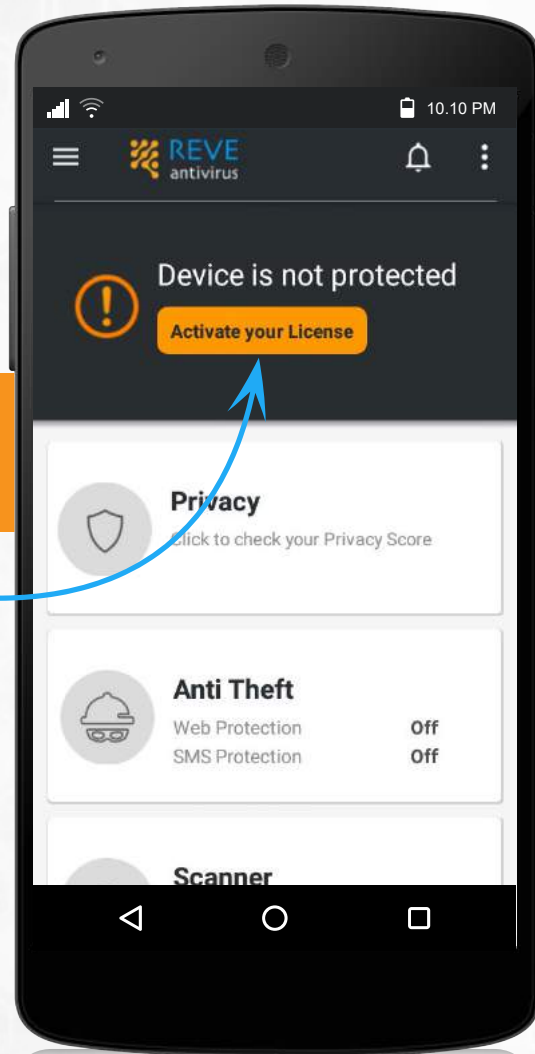
After verification, if you are unable to login, enter the same email id and password which was given at the time of registration to Login.



# How to install REVE Antivirus Mobile Security

8.

Click Activate Your License



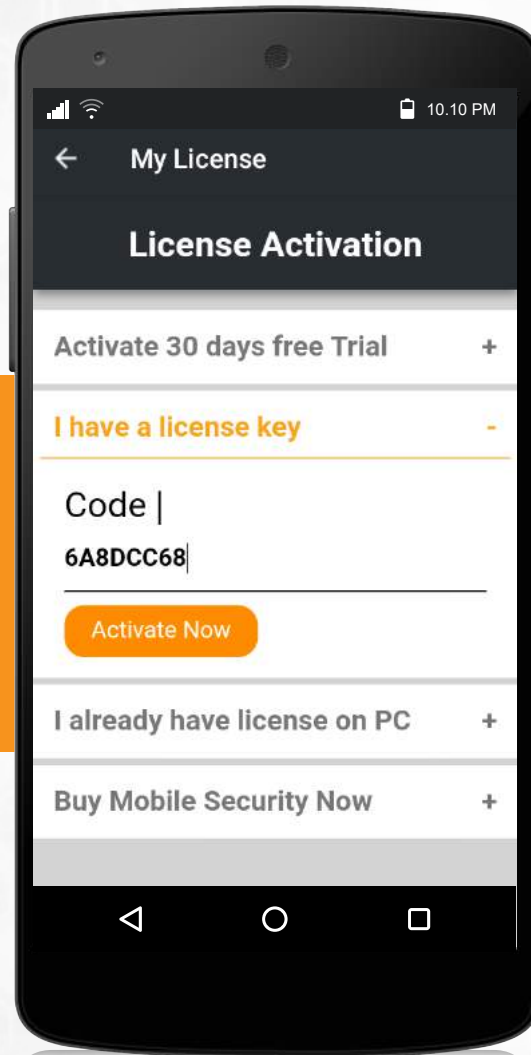
9.

Select 'Trial' or 'I have a license key from' Activate Your License option.

# How to install REVE Antivirus Mobile Security

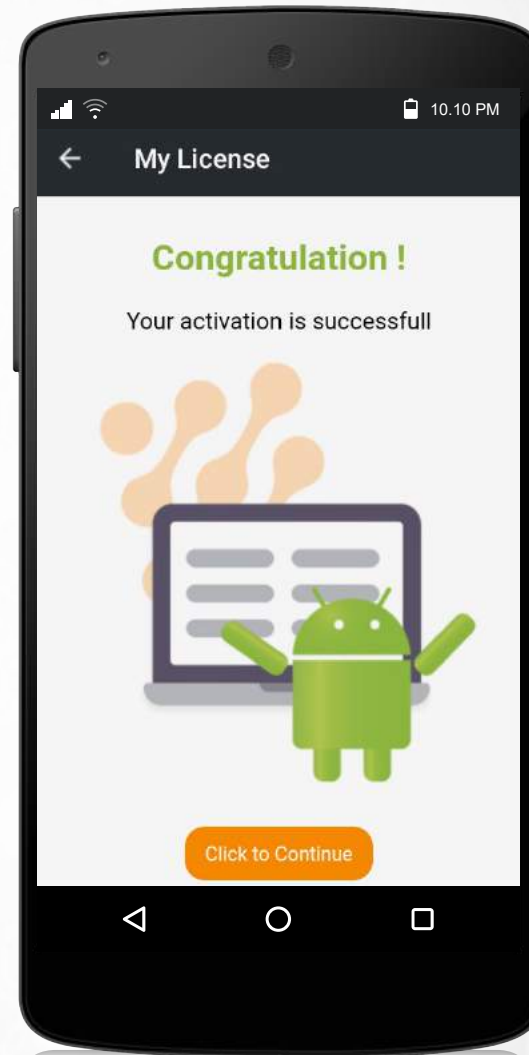
10.

From the REVE Mobile Security pack, take out the card and scratch it gently. Now enter the license key mentioned on the card and click on 'Activate Now.'



11.

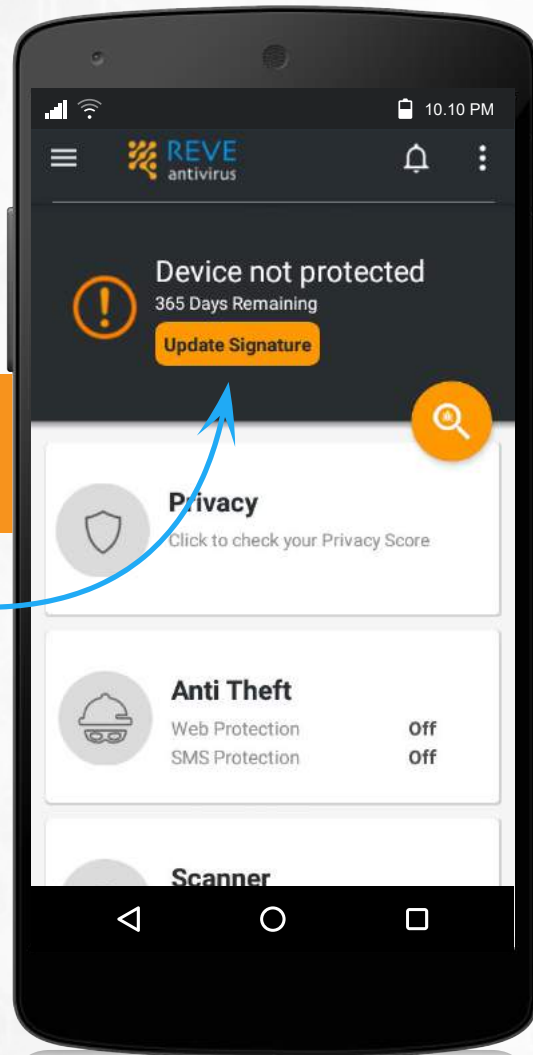
Congratulations! You have successfully completed REVE Antivirus Mobile Security Activation. Click the button below to go back to the home screen.



# How to install REVE Antivirus Mobile Security

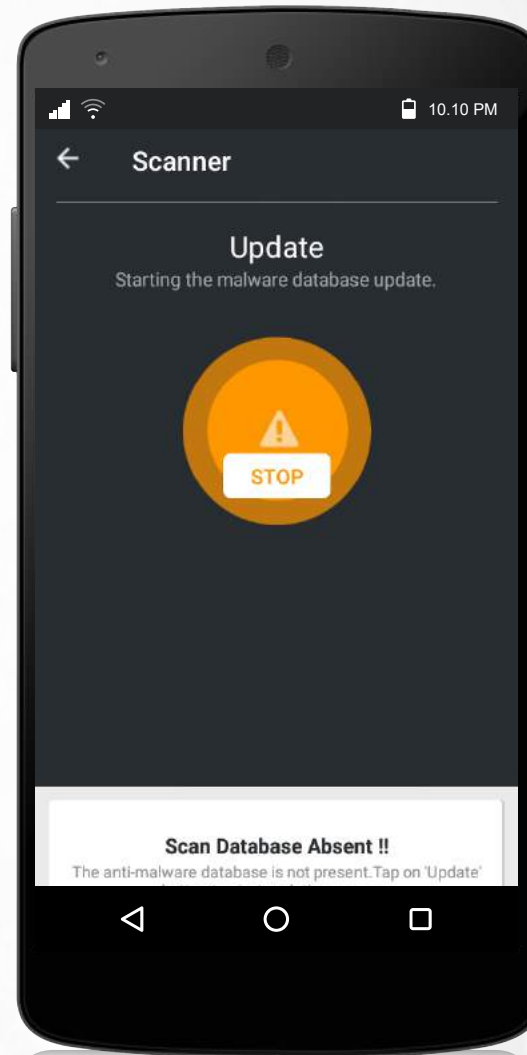
12.

Tap on  
'Update Signature'



13.

Please wait till the update  
is complete

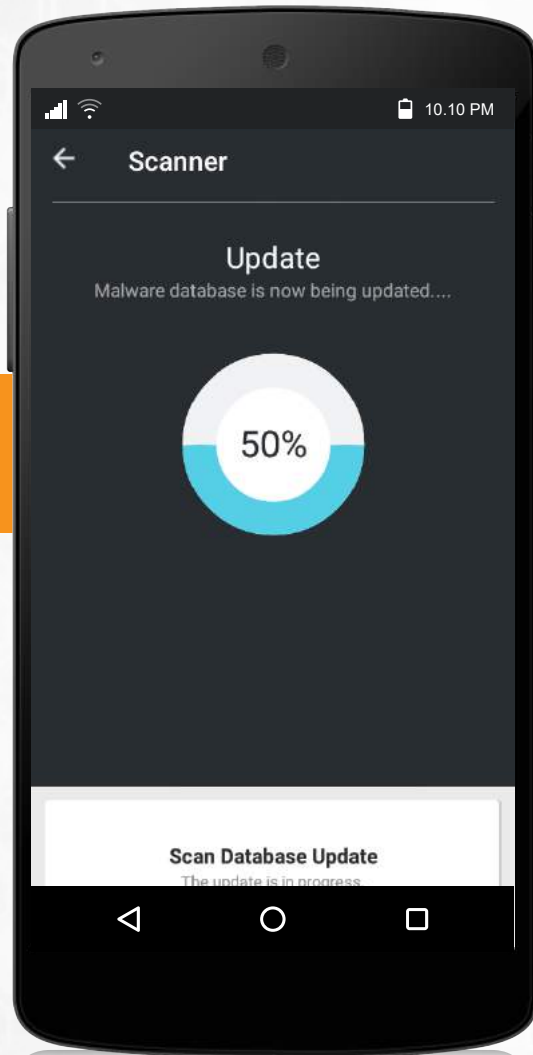




# How to install REVE Antivirus Mobile Security

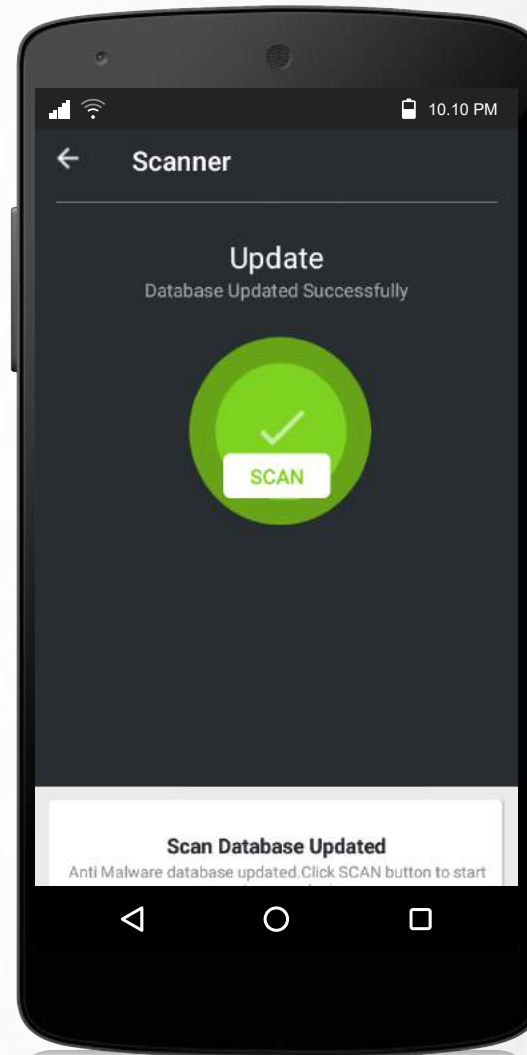
14.

Wait till the update icon turns green.



15.

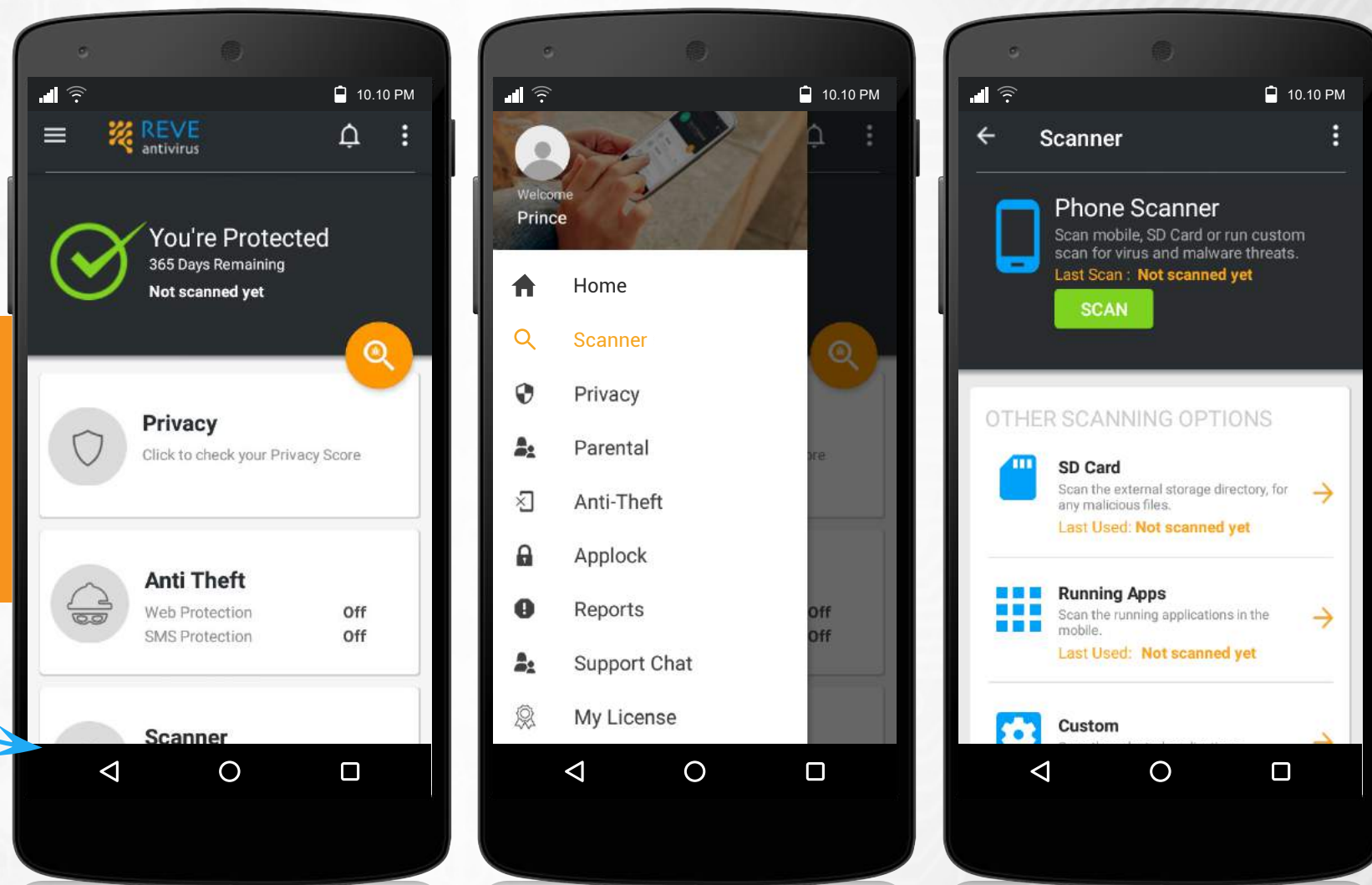
Once the update is completed, the color of the icon will turn green.



# How to install REVE Antivirus Mobile Security

16.

Once the update is complete, the icon will turn green. Now from Home, choose 'Scanner' to scan you phone & SD Card





## Anti-Theft

Anti-theft feature is the most striking feature of REVE Antivirus

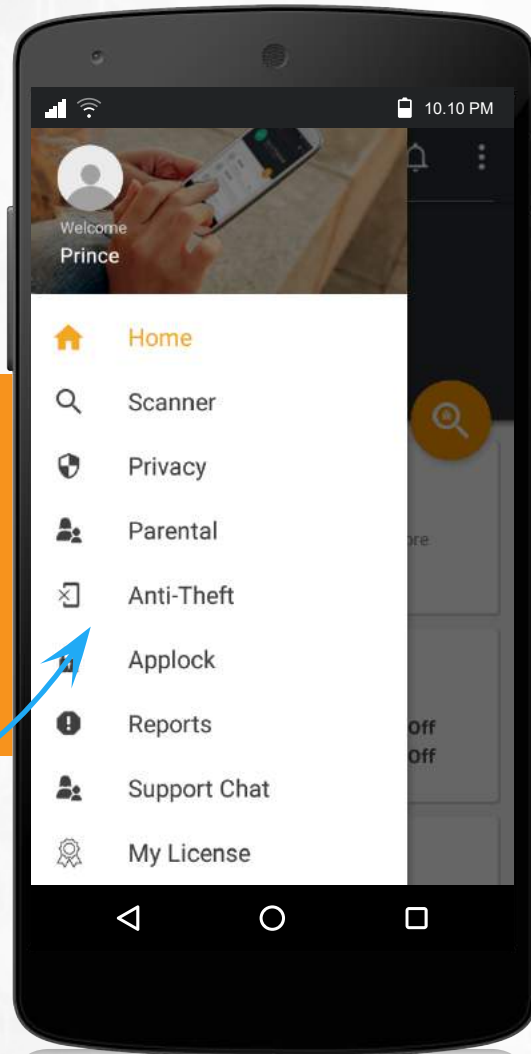
- If you are unable to locate your phone, login to dashboard (<https://myaccount.reveantivirus.com/login/index.htm>). Alternatively you can send SMS from another number. Even if your phone is on vibration or silent mode, the alarm will play.
- Even if you are at a distant location, you can lock your phone from the dashboard or sending a sms
- All the data on the phone can be wiped by sending a SMS or from the dashboard
- Perfect location tracking through the map from the website.



# Anti-Theft

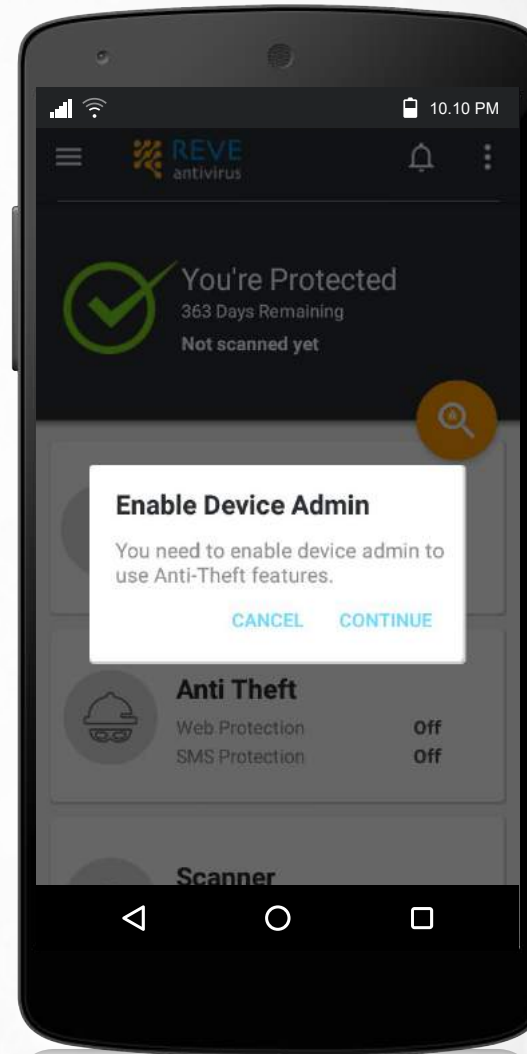
1.

To turn on the anti-theft feature, go to the Anti-Theft section from the menu bar in the top left corner of the REVE Antivirus Mobile Security app.



2.

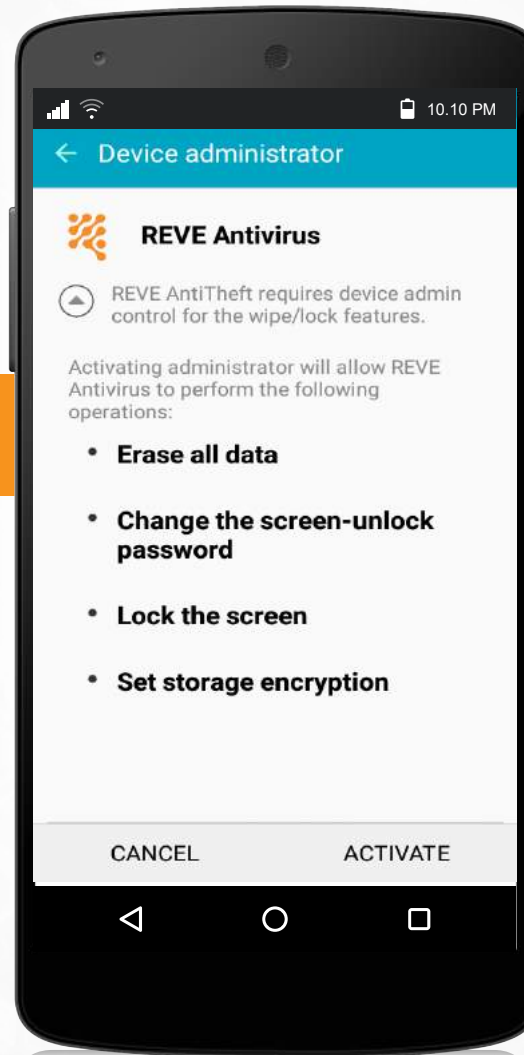
At the time of entry, you need to enable the device admin feature.





3.

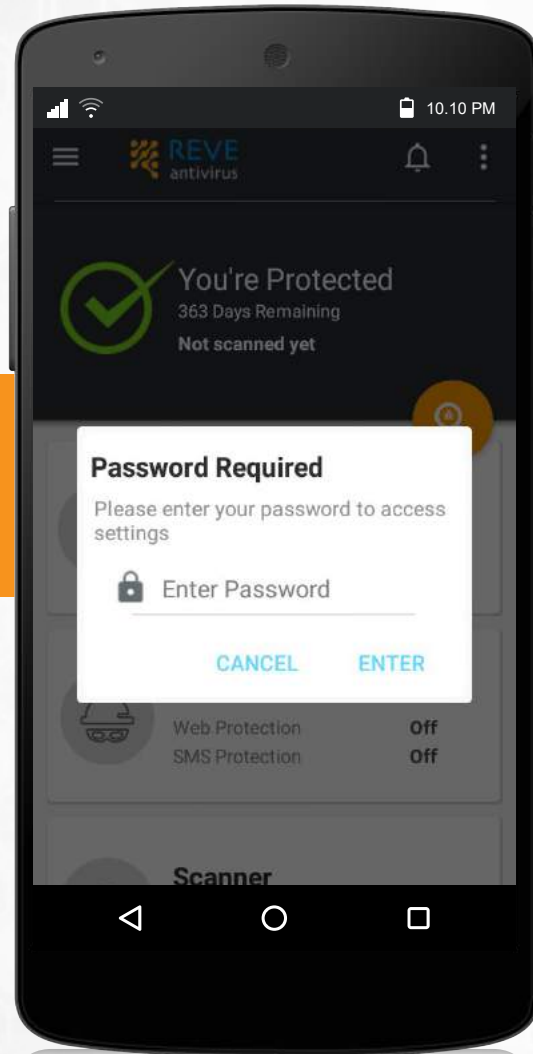
Tap on 'Activate'



# Anti-Theft

4.

Enter the password created during the registration process.



## Anti Theft

Enables you to track your mobile, lock or wipe out all the data in case the device is lost or stolen.

CLICK TO MANAGE SETTINGS



WEB CONTROL →



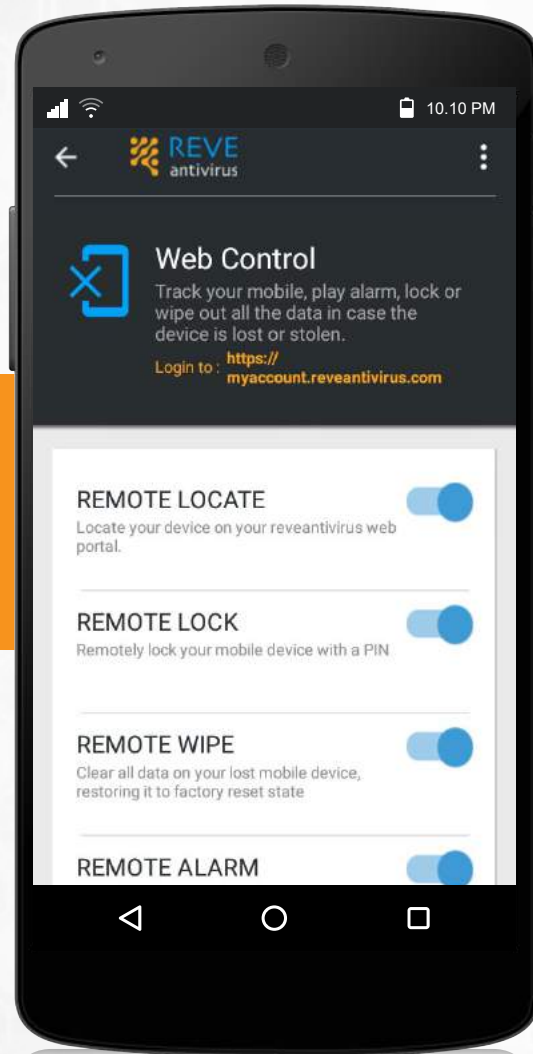
SMS CONTROL →

5.

Click on Web Control

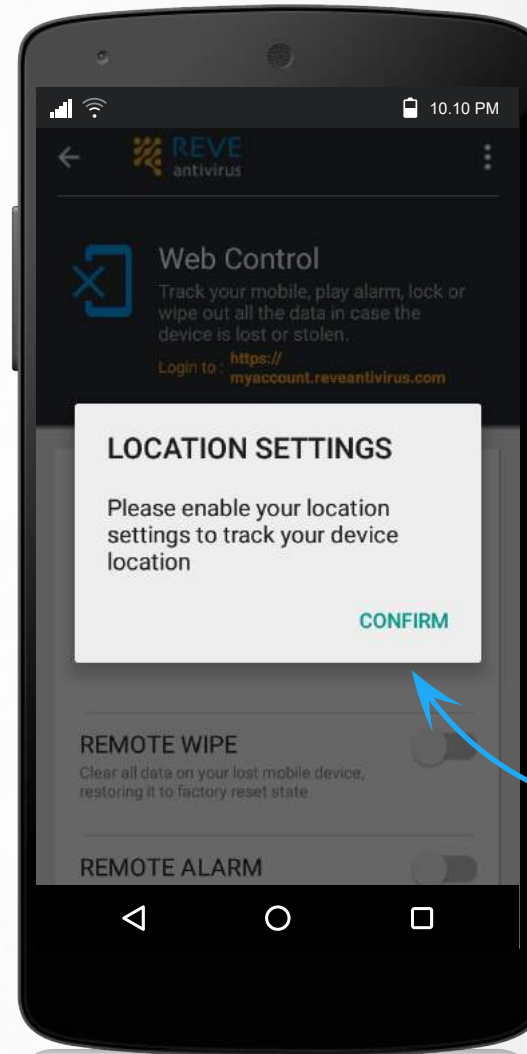
6.

Turn On Remote Lock, Remote Locate, Remote Wipe and Remote Alarm options



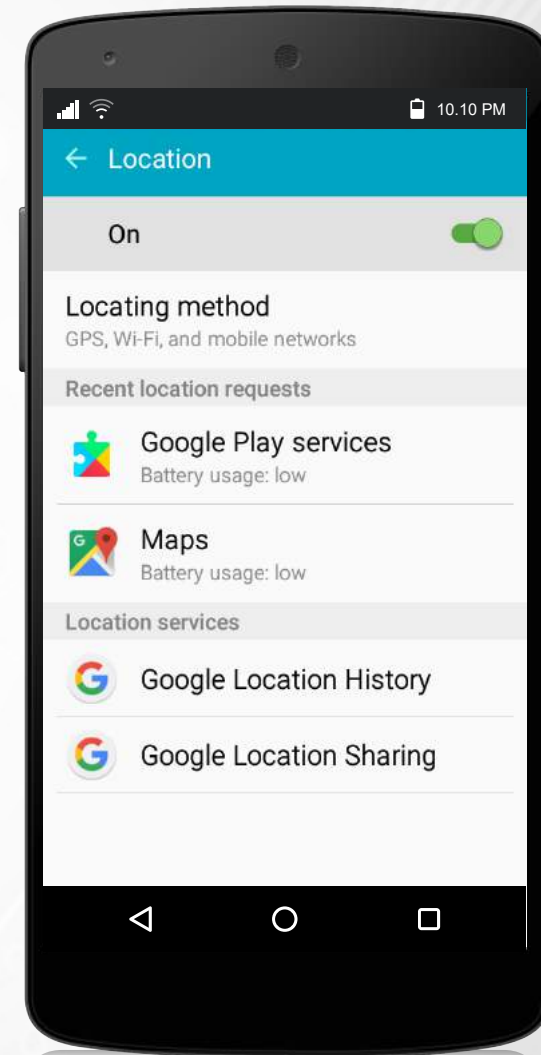
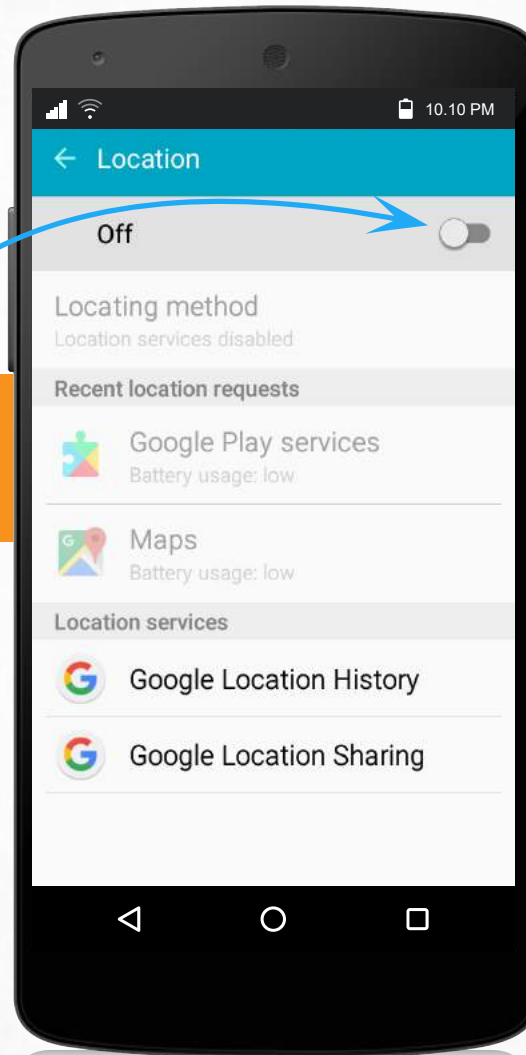
7.

To activate these features, enable Location settings.



8.

Turn on Location to activate the features.

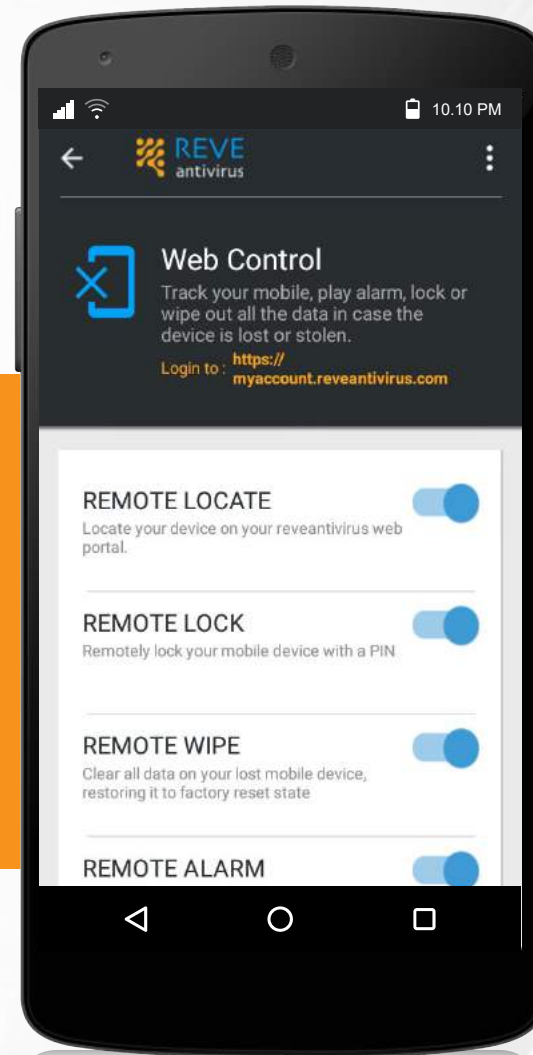


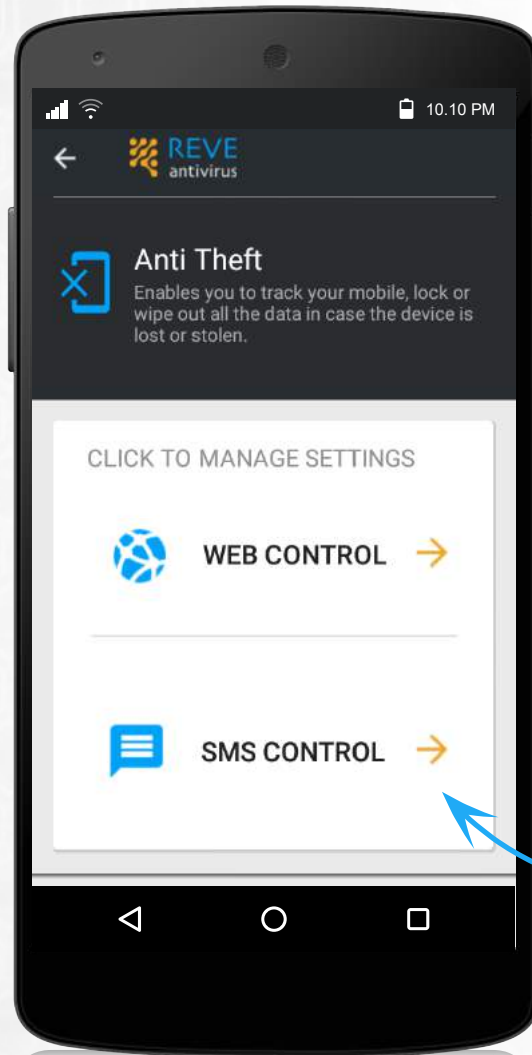


9.

## Web Control

Using web control from [www.myaccount.reveantivirus.com](https://www.myaccount.reveantivirus.com), you can lock your phone, change security lock, and erase data from a distant location. You can also play alarm, if you are unable to locate the phone.





10.

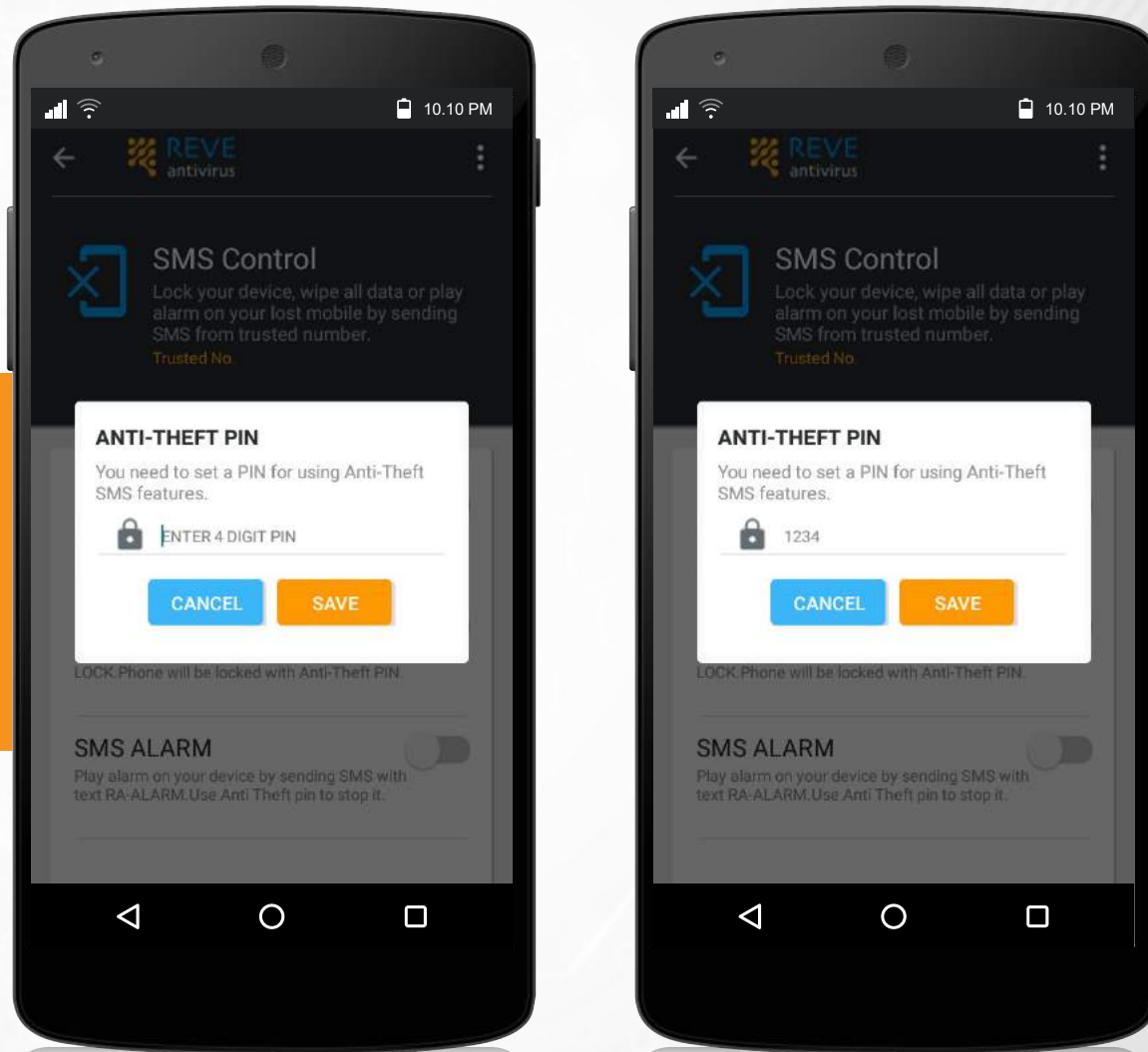
## SMS Control

Not only from a computer, but also by sending an SMS from the trusted number, you can play alarm. Wipe your data and lock the phone.

Tap on the SMS Control option.

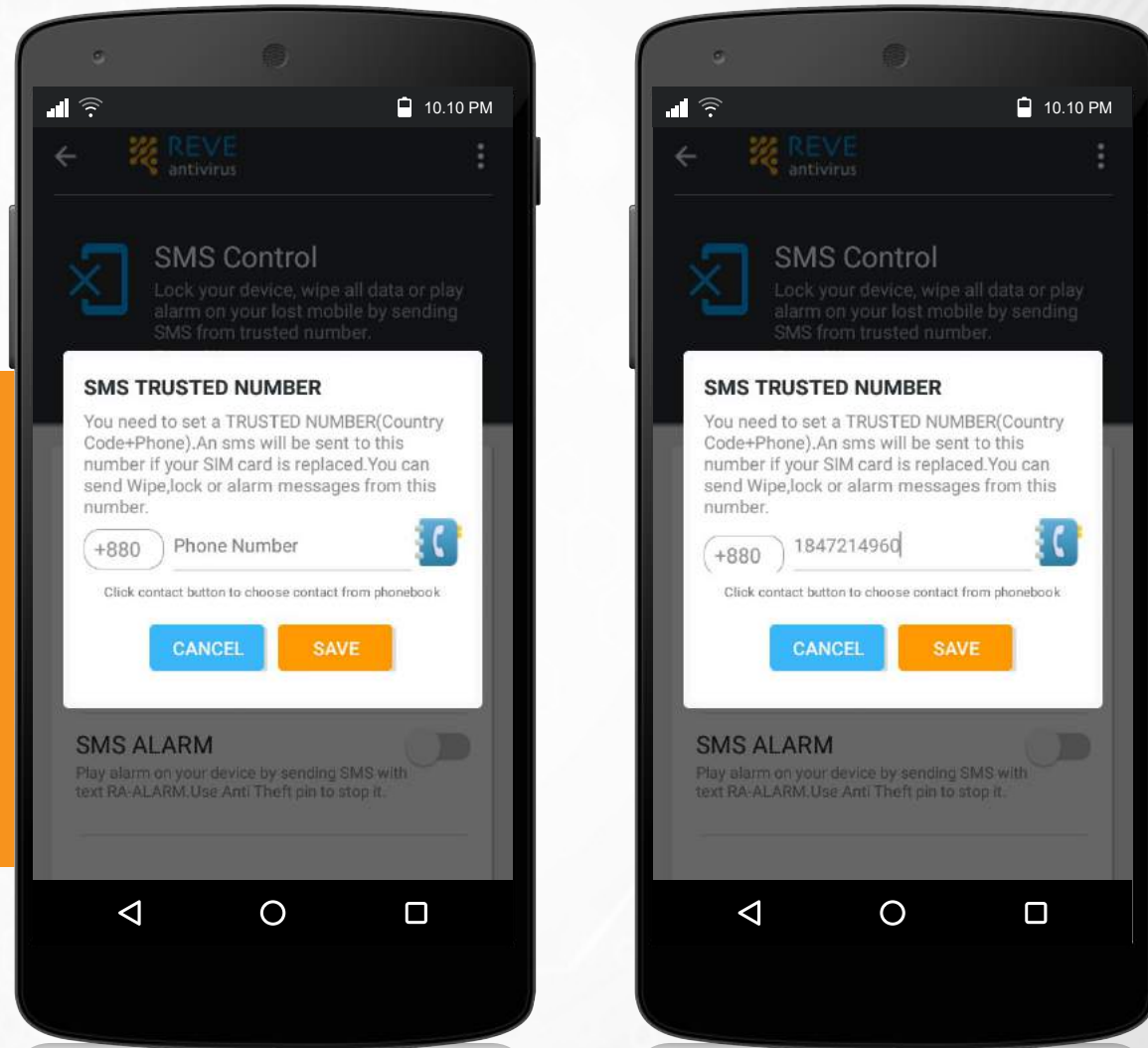
11.

As you enter here, you will be asked to set a PIN of four digits. You will need this PIN to lock your phone or play alarm, so save it with caution.



12.

Enter a Trusted number, which can be later used in case you lose your device. If your device is stolen and anyone uses a SIM Card, you will get the mobile number via SMS on your trusted number.

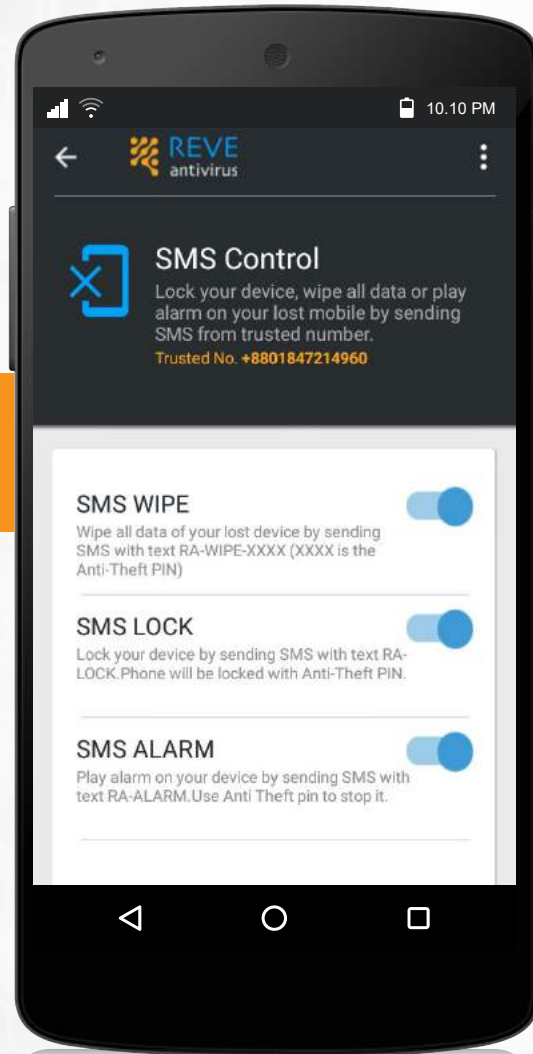




# Anti-Theft

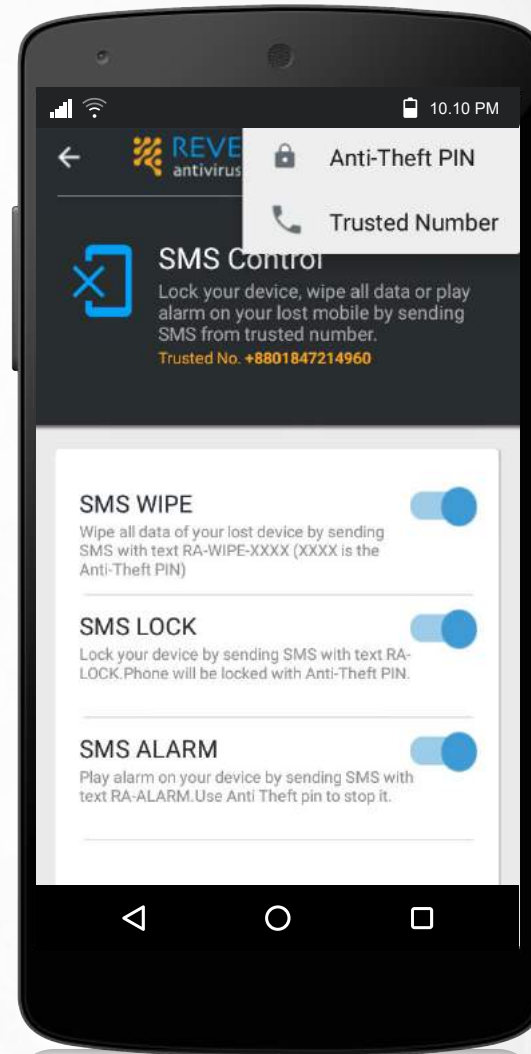
13.

Turn on SMS Wipe,  
Lock, Alarm



14.

Using this option, you  
can change your  
anti-theft PIN & trusted  
number.

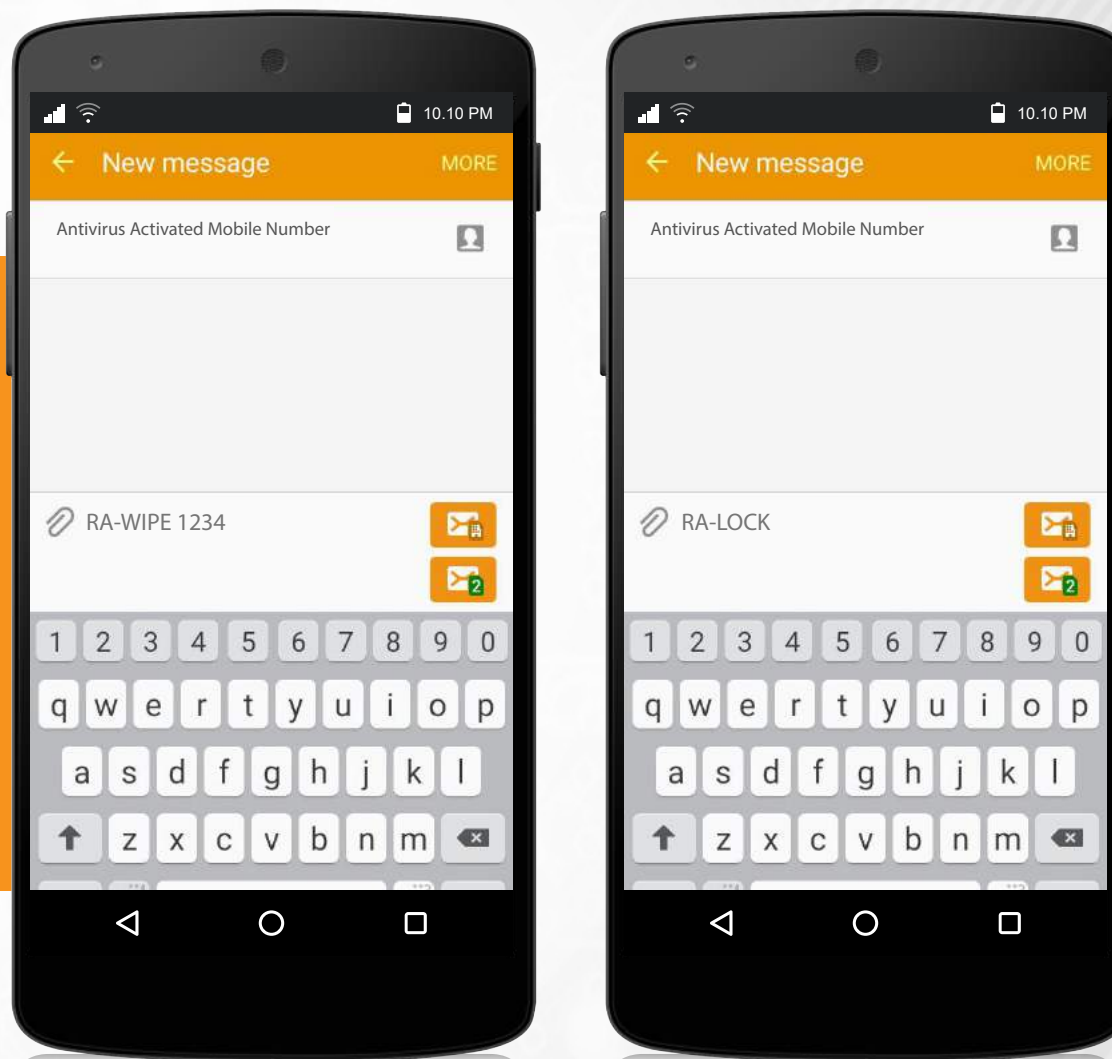


15.

## How to send SMS

In order to wipe data, type RA-WIPE-4 digit pin, send SMS to the installed phone number phone number from the trusted trust number. To lock the same way, write RA-LOCK and RA-ALARM and send the SMS.

It is important to note that if the alarm is played or phone is locked it must be opened with the four digit pin.

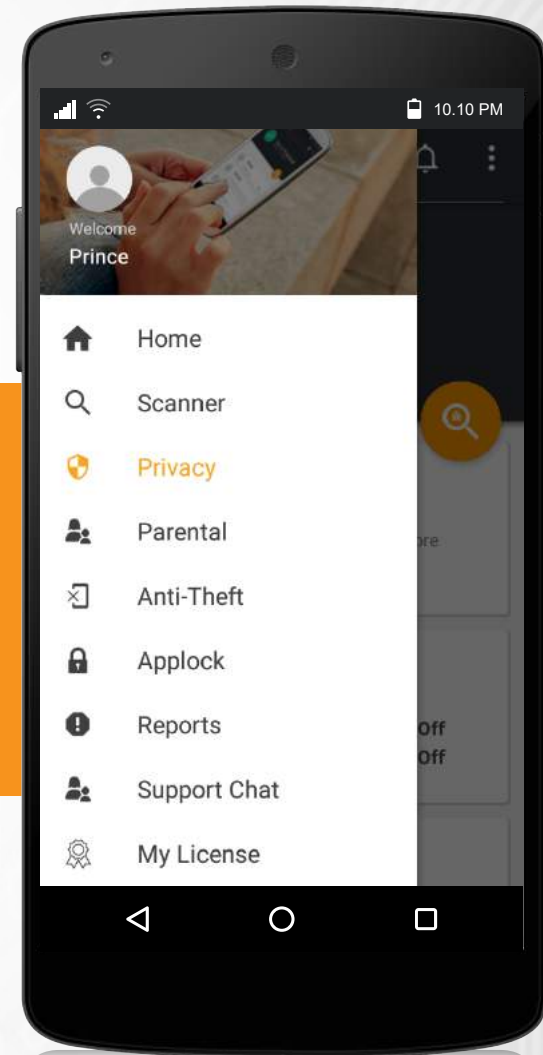


16.

## Privacy Advisor

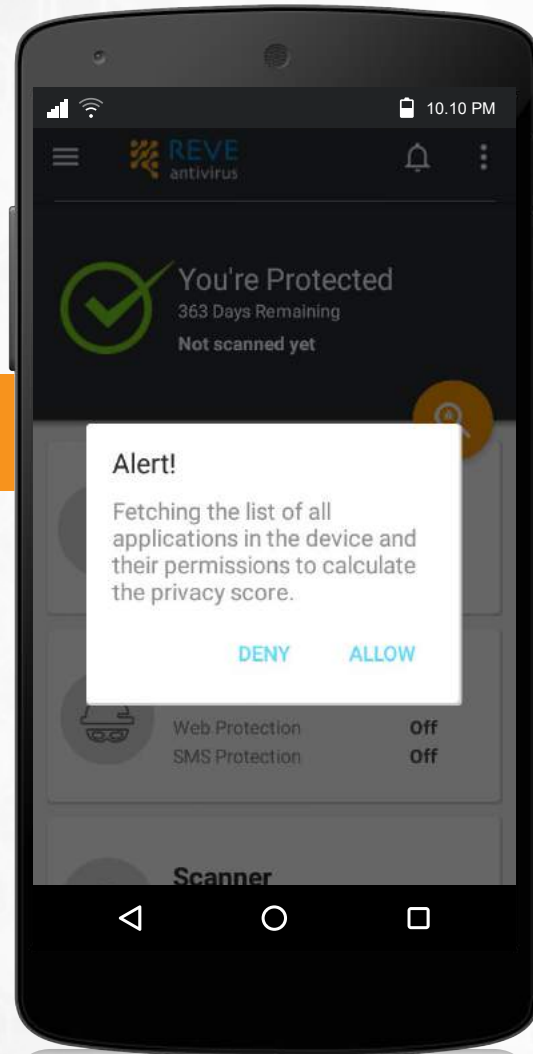
REVE Antivirus Privacy Advisor helps to check what info the apps are accessing in the background and identify risk apps.

To know which apps are risky among your apps, go to the Privacy Advisor option from the menu bar.



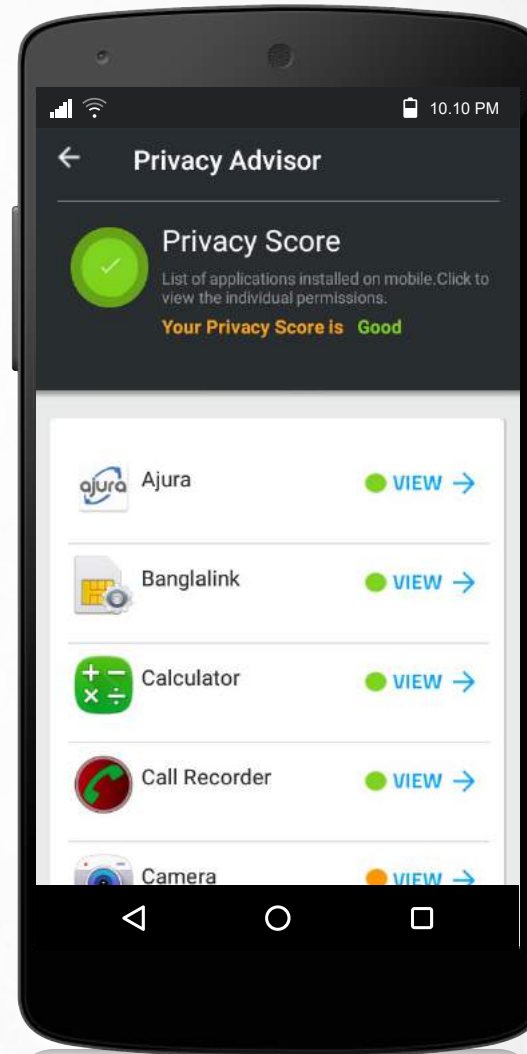
17.

Allow



18.

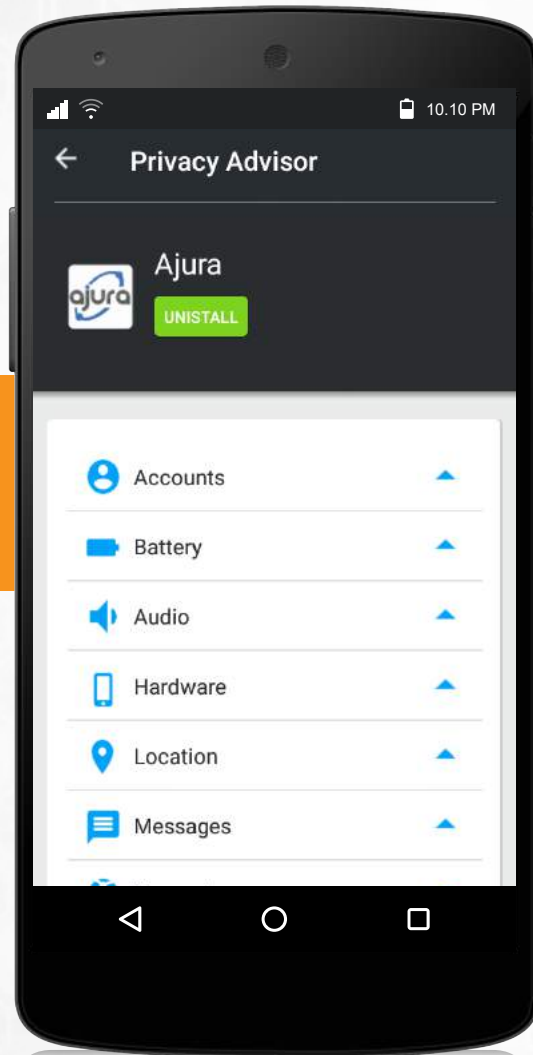
Take a look at the apps installed on your mobile phone.





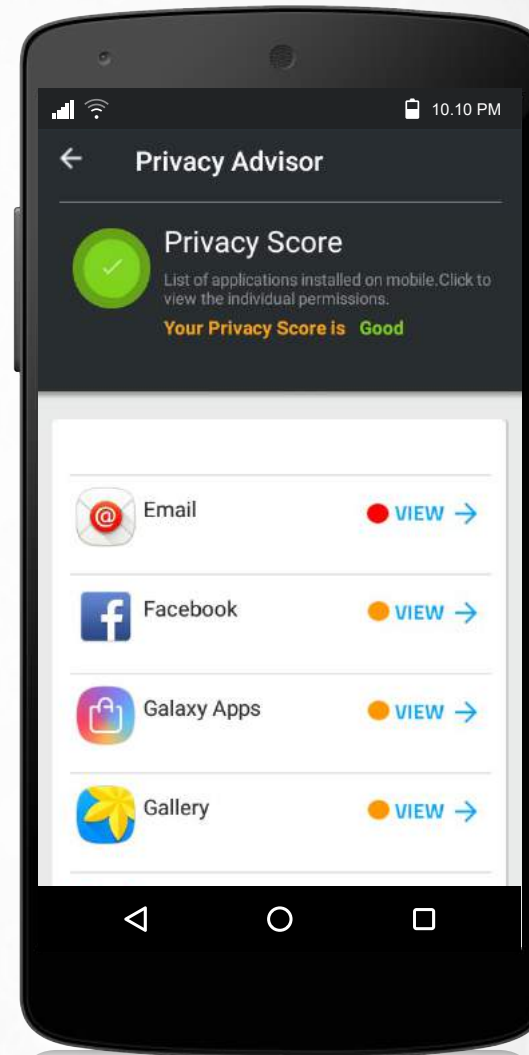
19.

From this section, you can see the permissions granted to each app.



20.

If you see the red icon against any app, be cautious to use that application.



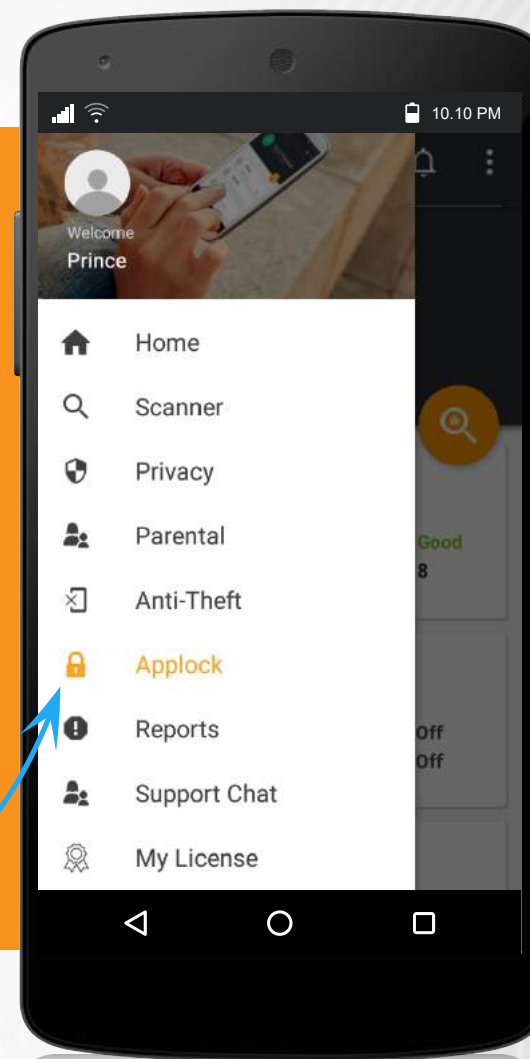
1.

## App Lock

Reverse mobile security has been improved, so no one can see a particular app, even if you have a phone or lockcode, other than the user. Besides, if the user has given three wrong passwords to open a locked app without any user, then his images will be saved on the selfie camera.

REVE Mobile Security has now more advanced App Lock feature which prevents anyone from accessing some particular apps even if he is aware of the mobile passcode. Due to this advanced app lock system, if any intruder tries to open a locked app entering wrong password 3 times, the mobile selfie camera is activated and snapshot of the person is captured.

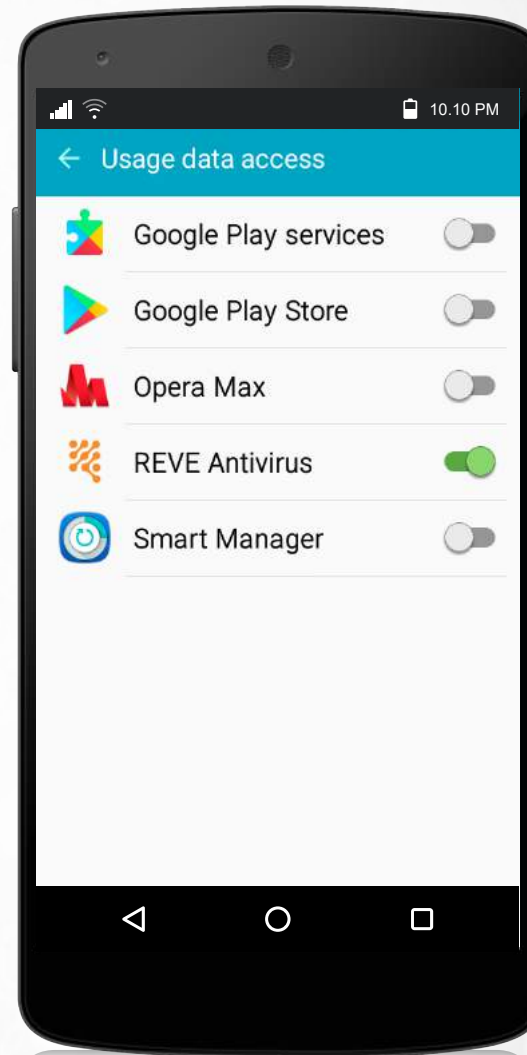
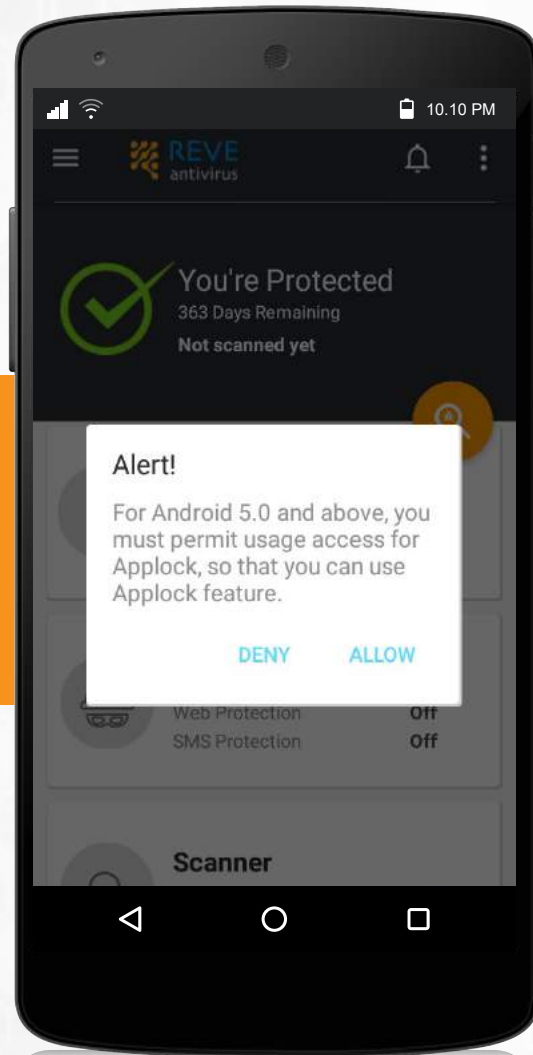
Click App Lock from the menu bar.



# App Lock

2.

For Android 5.0 or later versions, allow the Usage Data Access page on the side of the REVE Antivirus box.



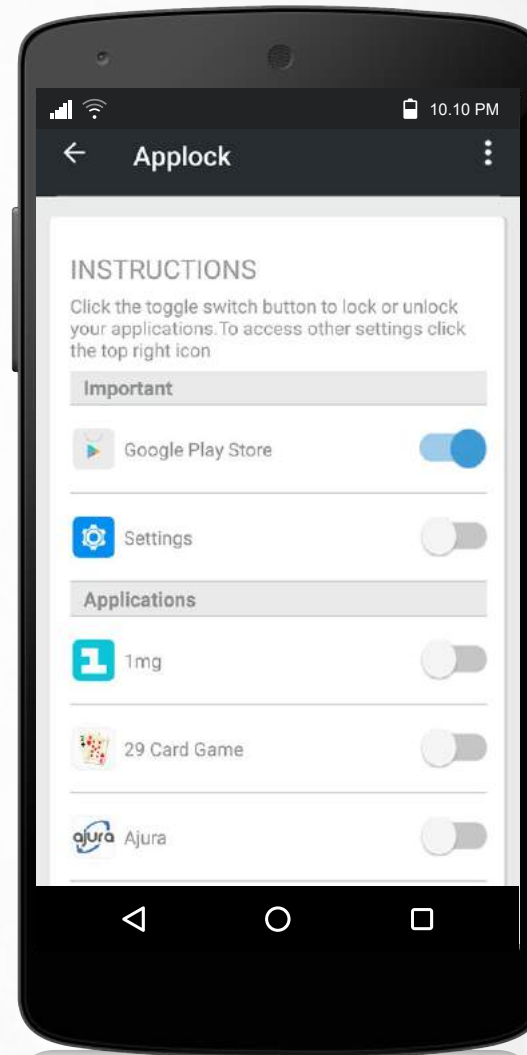
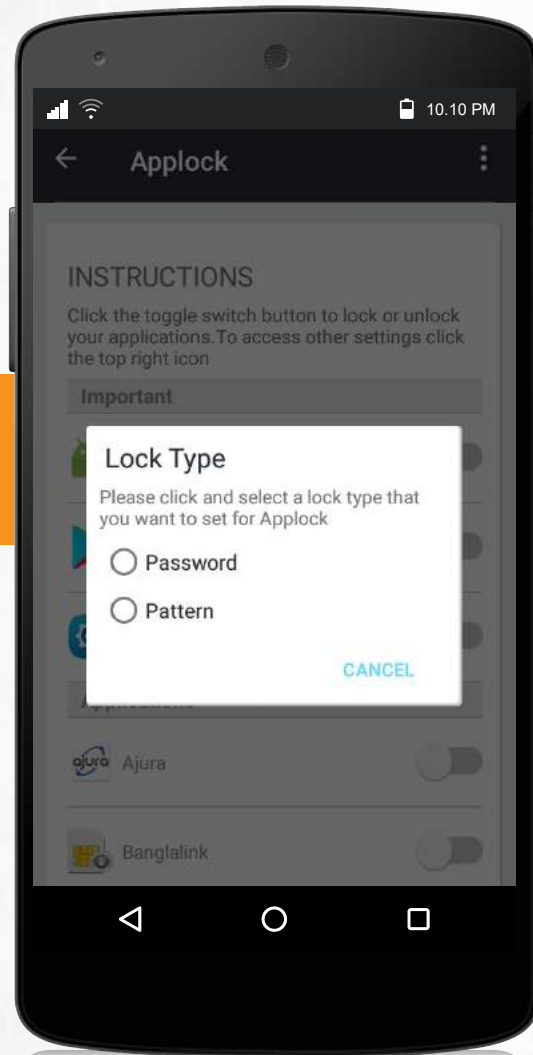
3.

From the Usage Data Access section, Turn on REVE Antivirus.

# App Lock

4.

Set your password or pattern as per your wish.



5.

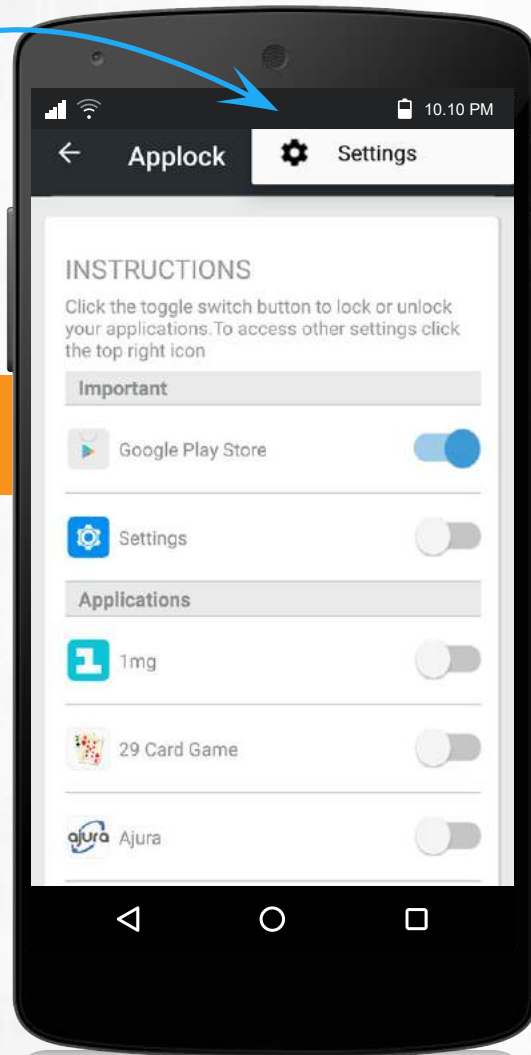
Now you can enable apps as per your requirement.



# App Lock

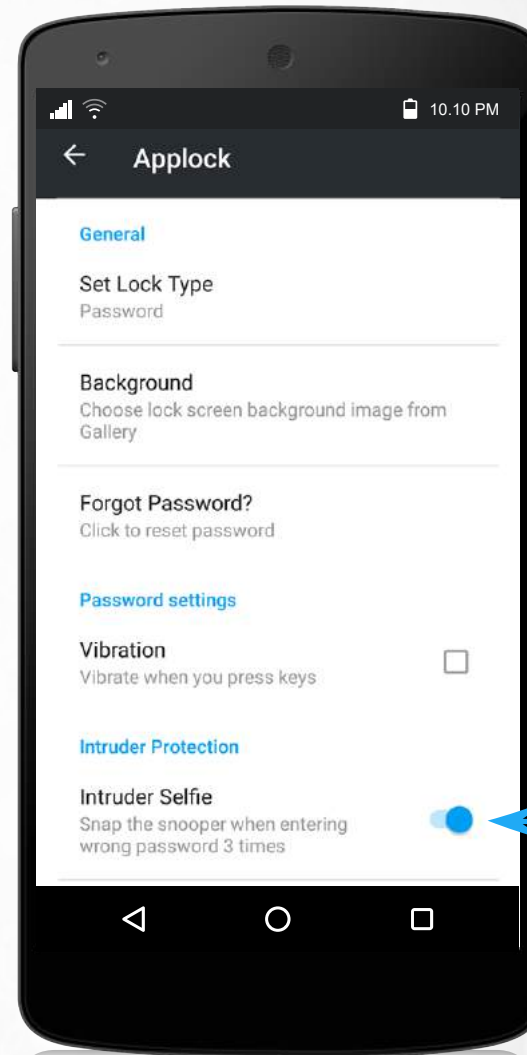
6.

Go to Settings options



7.

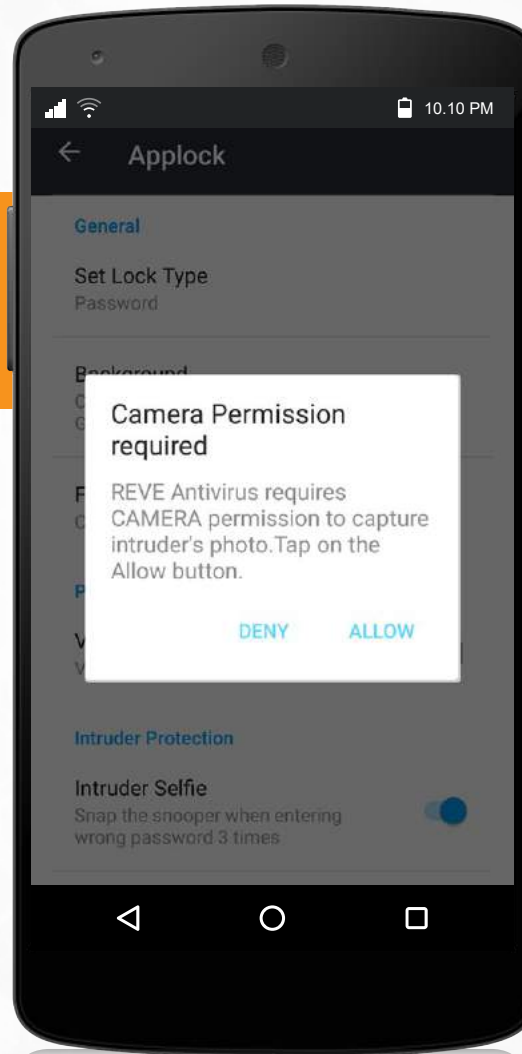
From Settings, turn on  
'Intruder Selfie'



# App Lock

8.

To activate this feature, please allow Camera Permission.



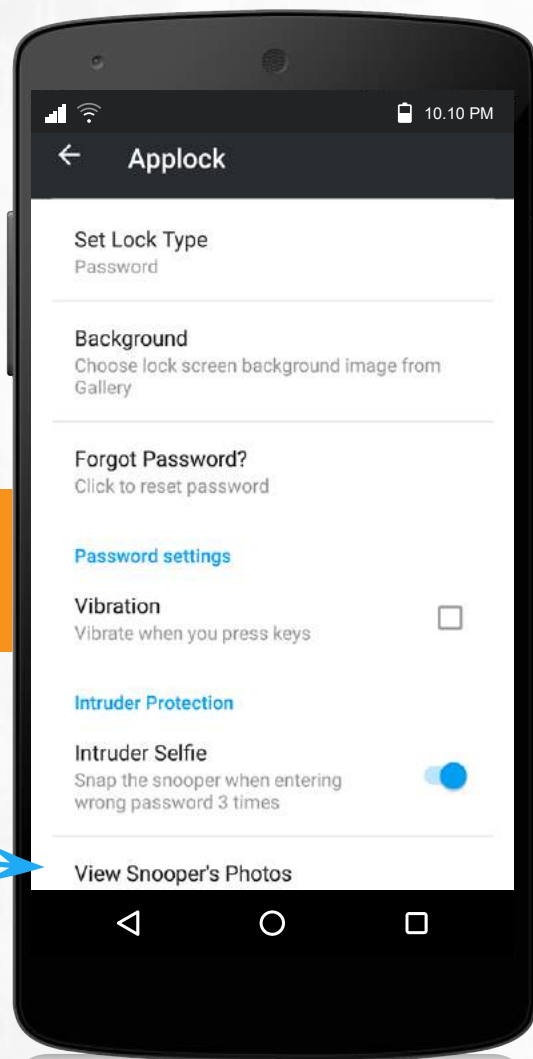
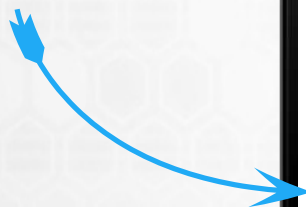
9.

After you have completed these settings, if anyone tries to open a locked app entering wrong password 3 times, the camera will get activated and a selfie of the person will be clicked.

# App Lock

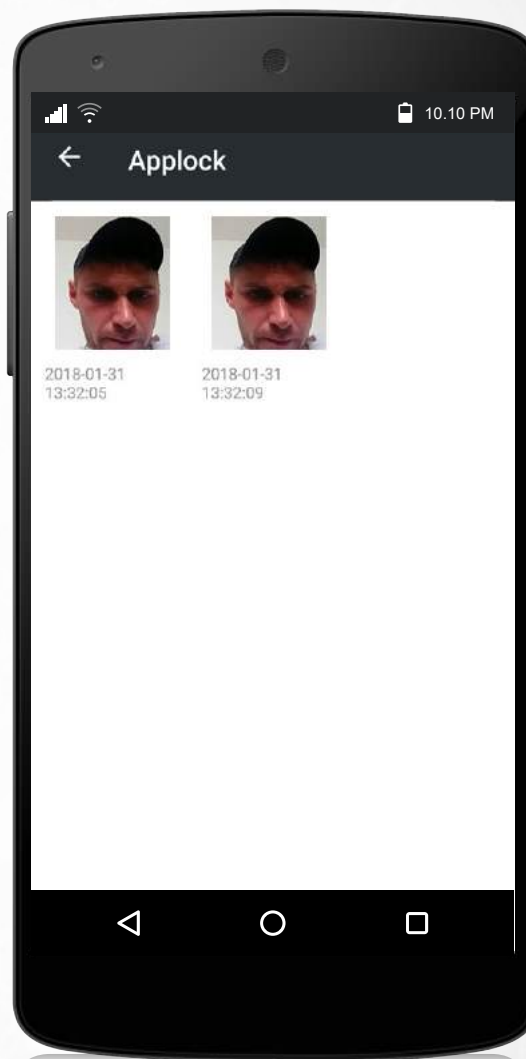
10.

To view this picture, click  
View Snooper's Photos.



11.

The unauthorized user's  
pic is saved in this  
section.



For any questions or help related to  
REVE Mobile Security



You can call on  
**01844079181**



Visit  
[www.reveantivirus.com](http://www.reveantivirus.com).



# Thank You!!



[www.reveantivirus.com](http://www.reveantivirus.com)